

아르코 예술극장 대극장 R/D 회로신설 공사

대극장 REMOTE DIRECT 회로 종실 리스트

PROJECT TITLE
이트코 예술극장 대극장
RD 회로 종실 공사

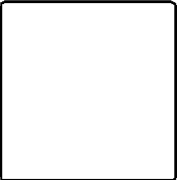
NOTES

NO.	REVISION

DRAWN BY
MECH.
DATE
SCALE
STANDARD
ELECT.
CHECKED BY
DESIGNED BY
APPROVED BY

NAME OF DRAWING
RD 종실 리스트
SCALE 1 / 20 DATE 2007. 08.

DRAWING NO. HAH-101
SHEET NO.



NO	DESCRIPTION	RD 회로	RD BOX	CONNECTOR	REMARKS
②.1	N01. SUSPENSION LIGHT BATTEN	3 회로	3 EA	2P8G x 2EA, 220V x 2EA	1회로씩 분리(BOX)
	N02. SUSPENSION LIGHT BATTEN	3 회로	3 EA	2P8G x 2EA, 220V x 2EA	1회로씩 분리(BOX)
	N03. SUSPENSION LIGHT BATTEN	3 회로	3 EA	2P8G x 2EA, 220V x 2EA	1회로씩 분리(BOX)
	N04. SUSPENSION LIGHT BATTEN	3 회로	3 EA	2P8G x 2EA, 220V x 2EA	1회로씩 분리(BOX)
②.2	UPPER HORIZONTAL LIGHT BATTEN	3 회로	3 EA	2P8G x 2EA, 220V x 2EA	1회로씩 분리(BOX)
	PROSCENIUM BRIDGE	3 회로	3 EA	2P8G x 2EA, 220V x 2EA	1회로씩 분리(BOX)
	BACK STAGE ARCH	1 회로	1 EA	2P8G x 2EA, 220V x 2EA	
②.5	REAR ELECTRIC NO.1	2 회로	2 EA	2P8G x 2EA, 220V x 2EA	1회로씩 분리(BOX)
	REAR ELECTRIC NO.2	2 회로	2 EA	2P8G x 2EA, 220V x 2EA	1회로씩 분리(BOX)
	REAR ELECTRIC NO.3	2 회로	2 EA	2P8G x 2EA, 220V x 2EA	1회로씩 분리(BOX)
②.6	BACK STAGE FLOOR WALL BOX(R)	2 회로	1 EA	2P8G x 4EA, 220V x 4EA	
	BACK STAGE FLOOR WALL BOX(L)	2 회로	1 EA	2P8G x 4EA, 220V x 4EA	
②.7	SIDE GALLERY WALL BOX(R)	3 회로	1 EA	2P8G x 6EA, 220V x 6EA	
	SIDE GALLERY WALL BOX(L)	3 회로	1 EA	2P8G x 6EA, 220V x 6EA	
②.8	PROSCENIUM TOWER WALL BOX(R)	1 회로	1 EA	2P8G x 2EA, 220V x 2EA	
	PROSCENIUM TOWER WALL BOX(L)	1 회로	1 EA	2P8G x 2EA, 220V x 2EA	
②.9	BLACONY FLY DUCT	1 회로	1 EA	2P8G x 2EA, 220V x 2EA	
	F.O.H -1	1 회로	1 EA	2P8G x 2EA, 220V x 2EA	시공후 인테리머감 포함
②.10	F.O.H -2	1 회로	1 EA	2P8G x 2EA, 220V x 2EA	
	REMOTE DIRECT PANEL(5KW x RD 40CKT)		1 SET		
②.12	REMOTE DIRECT CONTROLLER (40 C/IR)		1 SET		
총 RD 회로		40 회로			

PROJECT TITLE
**이도코 예술극장 대극장
 R/D 회로신선 공사**

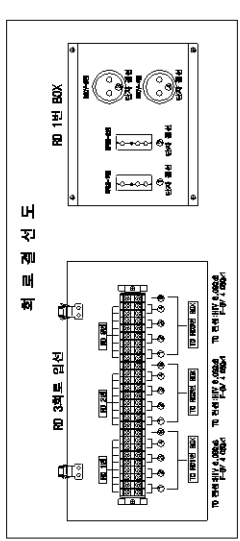
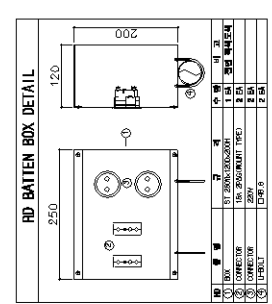
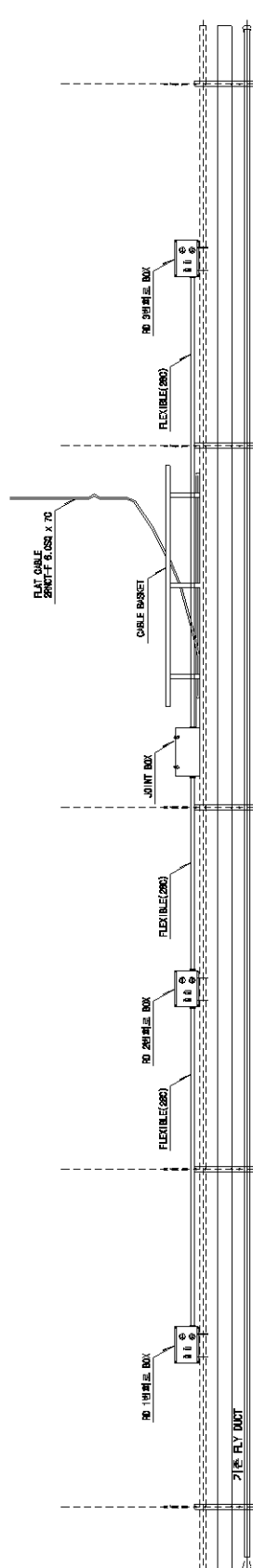
NOTES

REVISION

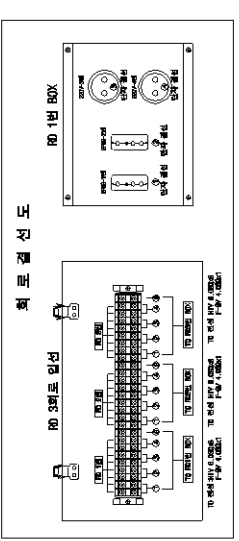
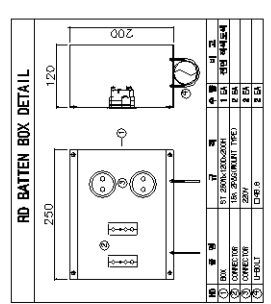
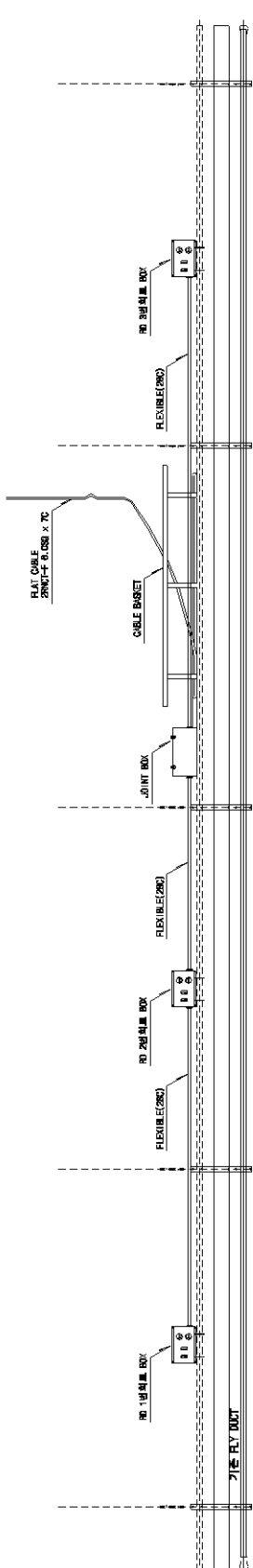
DRAWN BY
 MECH.
 LIGHT.
 STANDS.
 ELEC.
 CHECKED BY
 RE-DESIGNED BY
 APPROVED BY

NAME OF DRAWING
R/D 회로신선도-1
 SCALE 1 / 20 DATE 2007. 08.

DRAWING NO
HAN-002
 SHEET NO



NO	DESCRIPTION	RD 회선	RD BOX	CONNECTOR	REMARKS
1	NO1. SUSPENSION LIGHT BATTEN	3 회선	3 EA	2PAG x 2EA, 220V x 2EA	1회선용 분리(800)
2	NO2. SUSPENSION LIGHT BATTEN	3 회선	3 EA	2PAG x 2EA, 220V x 2EA	1회선용 분리(800)
3	NO3. SUSPENSION LIGHT BATTEN	3 회선	3 EA	2PAG x 2EA, 220V x 2EA	1회선용 분리(800)
4	NO4. SUSPENSION LIGHT BATTEN	3 회선	3 EA	2PAG x 2EA, 220V x 2EA	1회선용 분리(800)



NO	DESCRIPTION	RD 회선	RD BOX	CONNECTOR	REMARKS
1	UPPER HORIZONTAL LIGHT BATTEN	3 회선	3 EA	2PAG x 2EA, 220V x 2EA	1회선용 분리(800)

