

아르코 예술극장 대극장 R/D 회로신설 공사

대극장 REMOTE DIRECT 회로 중첩 리스트

NO	D E S C R I P T I O N	RD 회로	RD BOX	CONNECTOR	REMARKS
2.1	NO1. SUSPENSION LIGHT BATTEN	3 회로	3 EA	2P&G x 2EA, 220V x 2EA	1회로씩 분리(BOX)
	NO2. SUSPENSION LIGHT BATTEN	3 회로	3 EA	2P&G x 2EA, 220V x 2EA	1회로씩 분리(BOX)
	NO3. SUSPENSION LIGHT BATTEN	3 회로	3 EA	2P&G x 2EA, 220V x 2EA	1회로씩 분리(BOX)
	NO4. SUSPENSION LIGHT BATTEN	3 회로	3 EA	2P&G x 2EA, 220V x 2EA	1회로씩 분리(BOX)
2.2	UPPER HORIZONT LIGHT BATTEN	3 회로	3 EA	2P&G x 2EA, 220V x 2EA	1회로씩 분리(BOX)
2.3	PROSCENIUM BRIDGE	3 회로	3 EA	2P&G x 2EA, 220V x 2EA	1회로씩 분리(BOX)
2.4	BACK STAGE ARCH	2 회로	2 EA	2P&G x 2EA, 220V x 2EA	1회로씩 분리(BOX)
	REAR ELECTRIC NO.1	2 회로	2 EA	2P&G x 2EA, 220V x 2EA	1회로씩 분리(BOX)
2.5	REAR ELECTRIC NO.2	2 회로	2 EA	2P&G x 2EA, 220V x 2EA	1회로씩 분리(BOX)
	REAR ELECTRIC NO.3	2 회로	2 EA	2P&G x 2EA, 220V x 2EA	1회로씩 분리(BOX)
2.6	BACK STAGE FLOOR WALL BOX(R)	4 회로	1 EA	2P&G x 8EA, 220V x 8EA	
	BACK STAGE FLOOR WALL BOX(L)	4 회로	1 EA	2P&G x 8EA, 220V x 8EA	
2.7	SIDE GALLERY WALL BOX(R)	4 회로	1 EA	2P&G x 8EA, 220V x 8EA	
	SIDE GALLERY WALL BOX(L)	4 회로	1 EA	2P&G x 8EA, 220V x 8EA	
2.8	PROSCENIUM TOWER WALL BOX(R)	2 회로	2 EA	2P&G x 4EA, 220V x 4EA	
	PROSCENIUM TOWER WALL BOX(L)	2 회로	2 EA	2P&G x 4EA, 220V x 4EA	
2.9	BLACONY FLY DUCT	2 회로	2 EA	2P&G x 2EA, 220V x 2EA	1회로씩 분리(BOX)
	F. O.H -1	1 회로	1 EA	2P&G x 2EA, 220V x 2EA	
2.10	F. O.H -2	1 회로	1 EA	2P&G x 2EA, 220V x 2EA	
2.11	REMOTE DIRECT PANEL(SKW x RD SOCKET)		1 SET		
2.12	REMOTE DIRECT CONTROLLER (50 CIR)		1 SET		
	총 RD 회로	50 회로			

PROJECT TITLE
**아드리아 예술극장 대극장
 R/D 회로신설 공사**

NOTES

REVISION

NO	REVISION

DRAWN BY _____
 CHECKED BY _____
 DESIGNED BY _____
 APPROVED BY _____

NAME OF DRAWING
RD 중첩 리스트

SCALE 1 / 20 DATE 2007. 08.
 DRAWING NO. HAH-001
 SHEET NO.

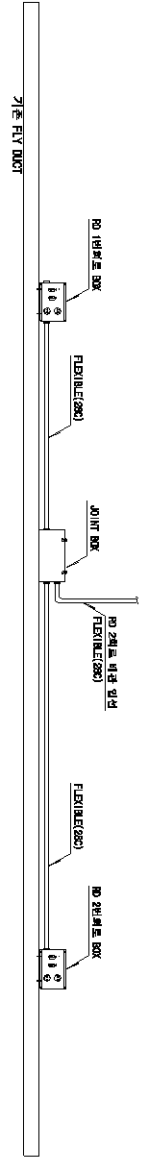
PROJECT TITLE
**이동식 배출극장 대극장
 R/O 환도신선 공사**

NOTES

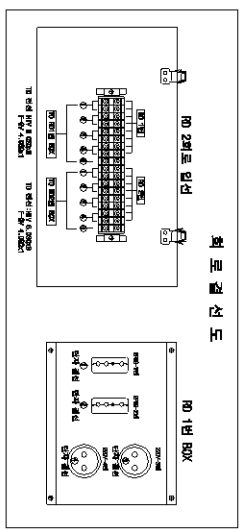
REVISED

DRAWN BY
 CHECKED BY
 DESIGNED BY
 APPROVED BY

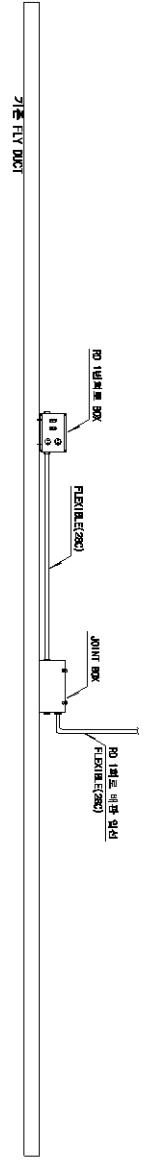
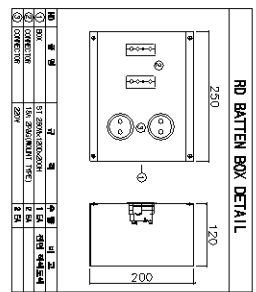
NAME OF DRAWING
R/O 환도신선도-4
 SCALE 1 / 20 DATE 2007.08.
 DRAWING NO. **HAN-005**
 SHEET NO.



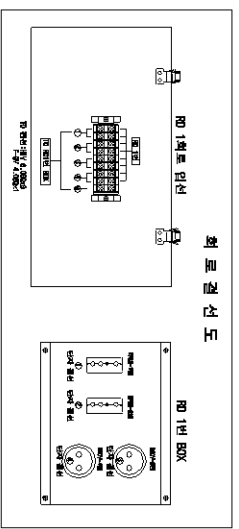
NO	DESCRIPTION	R/O BOX	NO BOX	CONNECTOR	REMARKS
2-9	BALCONY FLY DUCT	2 BOX	2 EX	2P63 X 25A, 220V X 25A	1회로씩 분리 (DUX)



회로 결선도



NO	DESCRIPTION	R/O BOX	NO BOX	CONNECTOR	REMARKS
2-10	F.O.H -1	1 회로	1 EX	2P63 X 25A, 220V X 25A	
	F.O.H -2	1 회로	1 EX	2P63 X 25A, 220V X 25A	



회로 결선도

