

**KIM**



**JIPYEONG**




# KIM




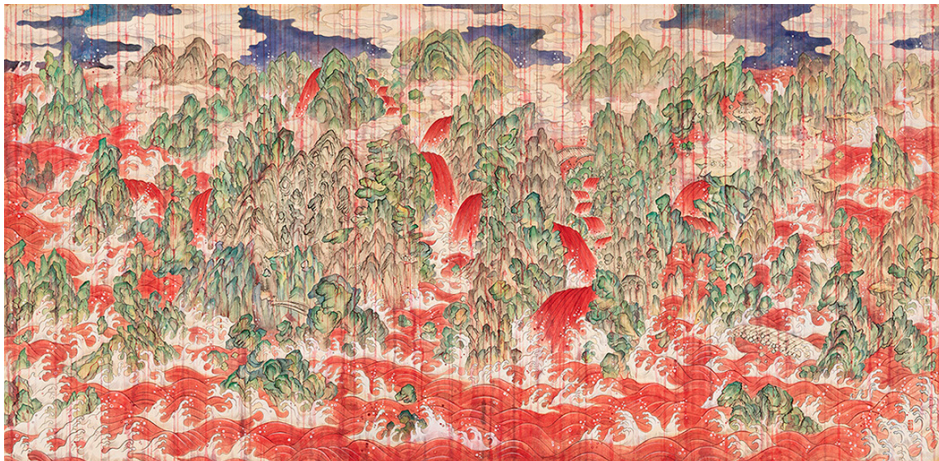
## JIPYEONG

Kim Jipyong had worked under a name Kim Jeehye from 2001 to 2012 and was mainly concentrated on reconstructing 'Minhwa' (Korean folk paintings) styles such as 'Chaekgeori', 'Munjado' and the decoration of 'Dancheong' (painting on traditional Korean architecture) in accordance with the contemporaries. Since 2013 she has reinterpreted traditional iconographies and concepts that are dislocated outside of the mainstream East Asian art history and worked from them.



She particularly focuses on the various conditions of 'tradition' made after the modern era, and the idiosyncratic features of Korean culture that are difficult to be translated. She also has concerns for nature, women, myths, alternative art historiography and the possibility of decolonization. Kim held 12 solo exhibitions and participated in more than 70 group exhibitions. She had also run an art space 'Sansumunwha' as a director from 2016 to 2022.





*Eum*

Lacquer, Muk (black ink), and pigment on Hanji (Korean handmade paper)

92×188.5cm, 2014

Courtesy of Seoul Museum of Art

*Diva—Grandmothers*

Four panel folding screen: Mulberry paper

attached silk on wood panel, microphone,

mixed media

approx.165×155cm, 2023

Courtesy of the artist



Kim Jipyong  
2024

Project Director  
Han Yoonah

Text  
Cho Insoo,  
Im Okhee,  
Soh Jeanhyoung,  
Carol Yinghua Lu,  
Konno Yuki,  
Han Yoonah,  
Yi Moon-seok,  
Ryu Haemin

Archive  
Ryu Haemin,  
Lee Hyeonju

Photography  
Hong Cheolki

Translation  
Taey lohe  
Lee Gyeongtak

Editor  
Han Yoonah

Designer  
Lee Jaemin

Publication  
Tigress on Paper

@KimJipyong  
tigress.on.paper@gmail.com

This book was published with support of the  
2022–2023 Artist Research—Study—Critique  
organized by Art Council Korea.

